



STATELY
PARK HOMES

CROWN COLLECTION



Built in Britain.
Crafted for life.

Stately Park Homes is one of Britain's leading manufacturers of residential park homes and holiday lodges. Every home is designed for comfortable year-round living and built to the British Standard 3632.

✓ **BS 3632 certified construction**

✓ **Personalised layouts and finishes**

✓ **Thoughtfully designed homes for modern living**

✓ **Trusted nationwide builder of park homes**



60+
Years' experience

BS 3632
Year-round living

UK
Manufactured

TABLE OF CONTENTS

A heritage of homebuilding	4
Why choose our Crown Collection	5
Crown Collection	
Crystal	6
Diamond	8
Sapphire	10
Topaz	12
The Stately Park Homes Standard	14
Warranty protection	15

A heritage of homebuilding

Founded in Bristol in 1963, we began as a small, hands-on workshop with a clear belief in making well-built homes that bring together comfort, practicality and style. Through skilled craftsmanship, close attention to detail and a genuine understanding of how people want to live, we grew from those early beginnings into a trusted nationwide maker of park homes and lodges. As the business developed, we invested in our future by establishing our own purpose-built factory in Abercarn, South Wales, where we remain today.

More than sixty years on, that same spirit still guides us. We are proud of the skilled workforce behind our homes and of the role we continue to play in supporting jobs, craftsmanship and long-standing family connections within the local community. By building on decades of experience while continually refining our homes for modern lifestyles, we have stayed true to the values that matter most to us: craftsmanship, care, thoughtful design and a commitment to creating homes people can feel proud of.



Our purpose-built manufacturing facility in South Wales.

Established 1963

Founded on craftsmanship, we have been building British park homes for over 60 years.

Customer mindset

Customer understanding has shaped our homes from the very beginning.

Design evolution

Our homes have continually evolved to reflect changing lifestyles, standards and customer needs.

Why choose our Crown Collection

The Crown Collection combines elegant design, statement-making style and modern construction to create distinctive homes for year-round living. Blending classic character with contemporary refinement, each model offers thoughtfully planned interiors, generous proportions and carefully considered finishes throughout. Available in both traditional and more architectural exterior styles, these homes are designed to complement their setting while bringing together comfort, presence and refinement expected of a modern home.

Created for impressive living

A collection designed for those who want statement styling and strong presence.

Make it more personal

Tailor key details to create a home that feels more individual to you.



CRYSTAL

A graceful home with enduring character, beautifully designed to delight.



The Crystal is a beautifully designed home that blends traditional charm with refined detailing. Its exterior features three distinctive roof gables with lighting, elegant bay windows and a welcoming entrance with decorative glazing and half columns. Patio doors from the dining area and shaped rooflines complete a timeless, graceful appearance.

Inside, vaulted ceilings and LED downlights create a bright, uplifting feel. The kitchen stands out with quartz worktops, a central island and classic features including a range cooker and Belfast sink. The lounge centres around an elegant electric fire, while bedrooms offer generous storage. A fully tiled bathroom with a step-up bath and striking vanity adds a luxurious finishing touch.



Our photos may include optional upgrades, modifications, or staging.

KEY FEATURES

- Striking traditional exterior with three distinctive lit roof gables
- Elegant entrance with decorative glazing, side screens and half columns
- Bay windows and cropped hip rooflines add shape and character
- Patio doors connect the dining area to outdoors
- Vaulted ceilings create a bright, spacious interior
- LED spotlights add a polished finish throughout
- Showpiece kitchen with quartz worktops, island and tiled finishes
- Range cooker, Belfast sink and pilasters add classic character
- Feature lighting, dresser and Velux window enhance the kitchen
- Spacious lounge with feature fire and TV alcove
- Generous bedroom storage and a stylish fully tiled bathroom

The Crystal is an elegant and inviting home with elevated features throughout.

QR CODE WEBSITE

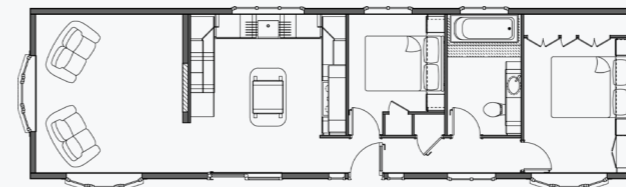


QR CODE 360 TOUR

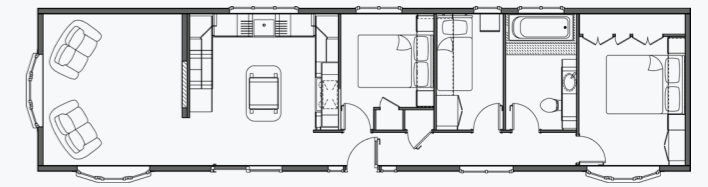


FLOOR PLANS

50' x 14' 2-bed



56' x 14' 3-bed



More sizes and layouts available on request.

DIAMOND

Defined by architectural glazing and a confident premium presence.



The Diamond presents a confident, contemporary exterior with clean architectural lines and a refined blend of render and low-maintenance cladding. Striking cathedral windows to the lounge and master bedroom create a bold visual statement while welcoming in natural light, complemented by feature box bay windows and clad entrance columns. Wall lights enhance the frontage, while a glazed front door with full-height side screens creates an impressive sense of arrival.

Inside, a tiled hallway leads to spacious living areas beneath vaulted ceilings with LED lighting. The kitchen combines character and practicality with quartz worktops, range cooker, Belfast sink and central island, while a roof window adds further light. The lounge offers expansive glazing and a feature fire, and the bedrooms include generous fitted storage. A fully tiled bathroom completes the home with a stylish finish.

KEY FEATURES

- Contemporary exterior with striking glazing and strong architectural lines
- Illuminated frontage with feature lighting enhancing kerb appeal
- Vaulted ceilings and LED lighting create a bright, spacious feel
- Tiled hallway offers a practical and elegant first impression
- Spacious lounge with feature fire and TV provision
- Cathedral and bay windows bring light and visual impact
- Traditional kitchen styling with modern detailing throughout
- Kitchen with quartz worktops, Belfast sink and central island
- Range cooker, glazed dresser and roof window add character
- Bedrooms offer generous built-in storage and thoughtful design
- Fully tiled bathroom with statement vanity and feature lighting

Crafted for those who appreciate character, style and standout design.

QR CODE WEBSITE



QR CODE 360 TOUR



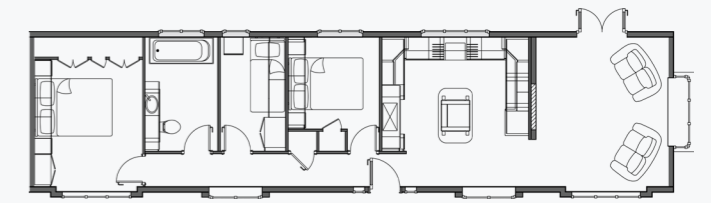
Our photos may include optional upgrades, modifications, or staging.

FLOOR PLANS

50' x 14' 2-bed



56' x 14' 3-bed



More sizes and layouts available on request.

SAPPHIRE

A flagship home defined by architectural design and premium specification.



The Sapphire is a striking, top-of-the-range park home with a confident, modern presence. Architectural rooflines, cathedral-style windows and sculpted box bays create real impact, while inviting natural light throughout. Illuminated soffits, feature wall lights and a welcoming glazed entrance framed by clad columns give the home a dramatic and impressive appearance, day or night.

Inside, the sense of space and quality continues. Vaulted ceilings and subtle lighting enhance the open-plan living area, centred around a beautifully appointed kitchen with statement island and premium finishes. A striking media wall adds definition and style, while bedrooms and bathrooms offer a calm, luxurious retreat, with bespoke storage, elegant fittings and a beautifully finished main bathroom completing this exceptional home.



Our photos may include optional upgrades, modifications, or staging.

KEY FEATURES

- Striking rooflines and feature lighting create a strong first impression
- Cathedral-style windows bring light and drama to key rooms
- Impressive glazed entrance with distinctive architectural detailing
- Vaulted ceilings enhance the home's bright, open feel
- Open-plan lounge, kitchen and dining space for modern living
- Statement kitchen with island, quartz finishes and range cooker
- Media wall with integrated fire adds style and definition
- Tiled entrance hall offers a smart and practical welcome
- Indulgent master bedroom with dressing area and boutique en-suite
- Stylish guest bedrooms with bespoke storage and standout features
- Showpiece bathroom with freestanding bath and twin-sink vanity

Created to feel impressive, welcoming and exceptional throughout.

QR CODE WEBSITE

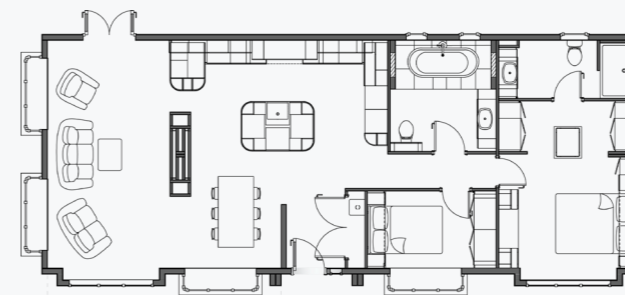


QR CODE 360 TOUR

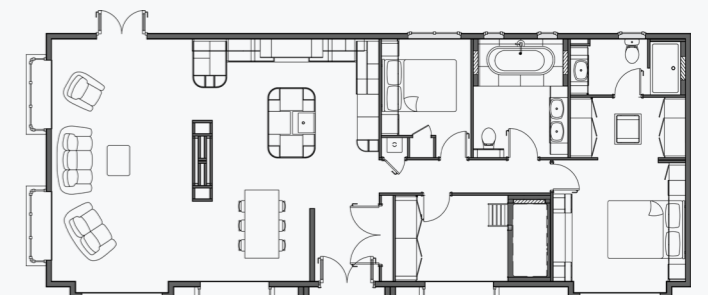


FLOOR PLANS

50' x 20' 2-bed



56' x 22' 3-bed with bunk



More sizes and layouts available on request.

TOPAZ

A traditionally styled home defined by refined design and elevated specification.



The Topaz presents a beautifully balanced exterior, blending traditional character with confident detailing. Elegant drop splay bay windows enhance the lounge and master bedroom, while additional bays add depth and symmetry. A striking gable entrance with decorative glazing, classic columns and subtle lighting creates a welcoming arrival, complemented by refined rooflines and a feature glazed gable to the kitchen.

Inside, a considered layout leads from the entrance hall into bright, vaulted living spaces centred around a standout kitchen with quartz surfaces, a range cooker and a generous island. The lounge and dining areas feel open and inviting, while the master suite offers a walk-in wardrobe and stylish en-suite. A well-appointed guest bedroom and statement main bathroom complete this impressive home.



Our photos may include optional upgrades, modifications, or staging.

KEY FEATURES

- Traditional exterior styling with strong rooflines and elegant character
- Bay windows add shape, light and visual appeal throughout
- Impressive entrance with decorative glazing and feature lighting
- Glazed kitchen gable brings extra light and architectural interest
- Vaulted ceilings create bright, open living spaces
- Statement kitchen with classic styling and contemporary detailing
- Quartz surfaces and range cooker bring style and practicality
- Central island with space for seating makes the kitchen naturally sociable
- Comfortable lounge with a feature fireplace creating a warm focal point
- Main bedroom suite with walk-in wardrobe and stylish en-suite
- Striking bathroom design with statement vanity and feature bath

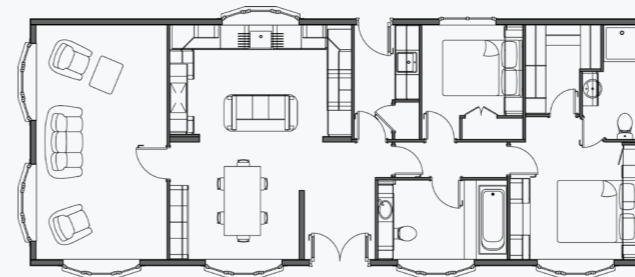
The Topaz delivers an exceptional living experience from every angle.

QR CODE WEBSITE

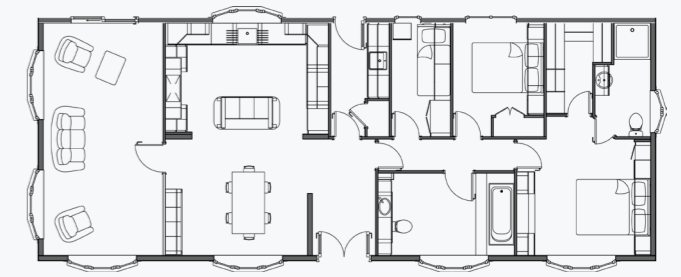


FLOOR PLANS

50' x 20' 2-bed with utility



56' x 20' 3-bed with utility



More sizes and layouts available on request.

The Stately Park Homes Standard

At Stately Park Homes we have a long history of manufacturing beautifully crafted park homes and lodges. Our company was founded in 1963, which coincidentally is the exact same year the very first British Standard for residential caravans was published.

Since then, both our company and the industry standards have evolved significantly. Today, we are proud that every home we build is constructed to the current British Standard 3632.

For our customers, this is more than just a technical certification; it is your assurance that the property is built to a specific level of durability, safety, and comfort.

What is BS 3632?

BS 3632 is the British Standard for residential park homes, setting the benchmark for homes built for permanent, year-round living. For homeowners, that means the reassurance of a home designed with comfort, energy efficiency, safety and durability in mind—so you can enjoy a space that feels warm, secure and ready for everyday life, whatever the season.

At a glance:

- Year-round durability
- Thermal efficiency
- Air quality & ventilation
- Sound insulation
- Safety features
- Energy efficiency

Members of the NCC

We are a proud member of the National Caravan Council (NCC), the UK trade body representing the tourer, motorhome, holiday home, and park home industries.

As part of our membership, our manufacturing process and our homes are regularly inspected throughout the year to ensure strict compliance with industry standards. We are delighted to state that for the past several years, Stately Park Homes has consistently achieved 5-star certification—the highest possible rating—from the NCC. This serves as an independent verification of our commitment to building homes of exacting standards.

Warranty protection built into every Stately home

Our warranty cover brings together manufacturer support, recognised third-party protection and individual product warranties, all designed to provide clarity, reassurance and peace of mind as you enjoy your new home.



10-Year Platinum Seal Warranty

Every new Stately home comes with Platinum Seal protection — an insurance-backed 10-year structural warranty scheme created for residential park homes, providing valuable long-term protection for your new home.



Our Manufacturer Warranty

From the very beginning, your home is supported by our two-year manufacturer warranty. It covers the home, its structure, and its fixtures and fittings, and is supported by our experienced Customer Care team, who are on hand to help beyond handover.

Layered cover

With layered warranty protection, your new home is supported in more ways than one. Alongside the 10-year Platinum Seal structural warranty and our manufacturer warranty, selected features, fittings and components across the home also benefit from their own supplier warranties, including windows and doors, roof tiles, heating systems and appliances, among others. Together, they provide added support and confidence for the years ahead.

Contact Us

Stately Park Homes
Unit 20, Darren Drive
Prince of Wales Ind. Est.
Abercarn
NP11 5AR



Phone: 01495 244472
Email: sales@stately.co.uk
[stately.co.uk](https://www.stately.co.uk)