



STATELY  
PARK HOMES

PARK HOMES

ESTABLISHED 1963 ——— MADE FOR MODERN LIVING



Built in Britain.  
*Crafted for life.*

Stately Park Homes is one of Britain's leading manufacturers of residential park homes and holiday lodges. Every home is designed for comfortable year-round living and built to the British Standard 3632.

- ✓ BS 3632 certified construction
- ✓ Personalised layouts and finishes
- ✓ Thoughtfully designed homes for modern living
- ✓ Nationwide network of parks



**60+**  
Years' experience

**BS 3632**  
Year-round living

**UK**  
Manufactured

TABLE OF CONTENTS

A heritage of homebuilding	5
Why people love park home living	6
Why choose our Park Homes	7
<b>Our Park Homes</b>	
Badminton	8
Cardigan Cottage	10
Chartwell	12
Chartwell Single	14
Chatsworth Gold	16
Goodwood	18
Hardwick	20
Hatfield	22
Kensington	24
Tredegar Elite	26
Tredegar Elite Single	28
Wentwood	30
Wentwood Single	32
Windsor	34
Woburn	36
The Stately Park Homes Standard	38
Warranty protection	39
Buying Guides	40
Buying Journey	41

OUR HISTORY

## A heritage of homebuilding

Founded in Bristol in 1963, we began as a small, hands-on workshop with a clear belief in making well-built homes that bring together comfort, practicality and style. Through skilled craftsmanship, close attention to detail and a genuine understanding of how people want to live, we grew from those early beginnings into a trusted nationwide maker of park homes and lodges. As the business developed, we invested in our future by establishing our own purpose-built factory in Abercarn, South Wales, where we remain today.

More than sixty years on, that same spirit still guides us. We are proud of the skilled workforce behind our homes and of the role we continue to play in supporting jobs, craftsmanship and long-standing family connections within the local community. By building on decades of experience while continually refining our homes for modern lifestyles, we have stayed true to the values that matter most to us: craftsmanship, care, thoughtful design and a commitment to creating homes people can feel proud of.



Our purpose-built manufacturing facility in South Wales.

### Established 1963

Founded on craftsmanship, we have been building British park homes for over 60 years.

### Customer mindset

Customer understanding has shaped our homes from the very beginning.

### Design evolution

Our homes have continually evolved to reflect changing lifestyles, standards and customer needs.

## Why people love park home living

Park home living offers the benefits of a more relaxed pace and a welcoming community feel. With everything on one level, day-to-day life feels simpler—easy to maintain, easy to manage, and easy to enjoy. For many, that combination of independence and community brings real peace of mind, comfort and reassurance.

A park home is more than a place to live — it is a lifestyle that can open the door to a more enjoyable way of life. Residents value the freedom that comes with a modern, efficient home in an attractive community setting, where life can feel calmer and more rewarding. It is an opportunity to embrace a new chapter with comfort and confidence.

- ✓ **Secure gated park community**
- ✓ **Managed shared spaces**
- ✓ **Single-storey living**
- ✓ **A new home with layered warranty protection**
- ✓ **Manageable living spaces**
- ✓ **Relaxed community lifestyle**
- ✓ **Retain independence**
- ✓ **Less daily maintenance and more time to enjoy the things you love**



Enjoy the privacy of your own home and space, with the reassurance of a managed setting. A comfortable balance of independence and wellbeing.

## Why choose our Park Homes

Our residential park homes are UK-built, balancing elegant design, modern construction, and everyday practicality. Each model is crafted to residential standards for year-round living, with thoughtfully planned interiors that feel bright, warm, and remarkably spacious. From classic silhouettes to contemporary lines, our homes are designed to sit beautifully within established settings while delivering the comfort of a modern home.

### Models for every lifestyle

Choose from a wide range of park homes, each crafted to suit different needs, tastes, budgets and lifestyles.

### Add your own personality

Make your home your own, with tailored touches guided by our design team.



# BADMINTON

Modern lines, signature front entry—  
confidently welcoming.



This contemporary park home combines modern design with practical comfort. The front entrance opens into a welcoming hallway with a generous cloak cupboard before leading into a bright, open-plan living area. Vaulted ceilings across the lounge, dining space, and kitchen enhance the sense of space and light, creating a relaxed environment for everyday living.

The kitchen is stylish and functional, featuring integrated appliances and a high-level double oven as standard. The master bedroom offers a peaceful retreat with a walk-in wardrobe and dressing area, while the second bedroom provides comfortable guest accommodation. The main bathroom adds a touch of luxury with a built-in bath, illuminated alcoves, and thoughtful storage.



Our photos may include optional upgrades, modifications, or staging.

## KEY FEATURES

- Front-entry design
- Vaulted ceilings & LED spotlights to the living spaces
- Integrated kitchen appliances & high-level double oven
- Master bedroom featuring a walk-in wardrobe
- En-suite shower room and vanity storage
- Bathroom with tiled walls, built-in bath, modern illumination, and generous storage
- Hallway with a generous cloak cupboard
- Ample storage throughout
- Personalise your home with a choice of exterior and interior finishes

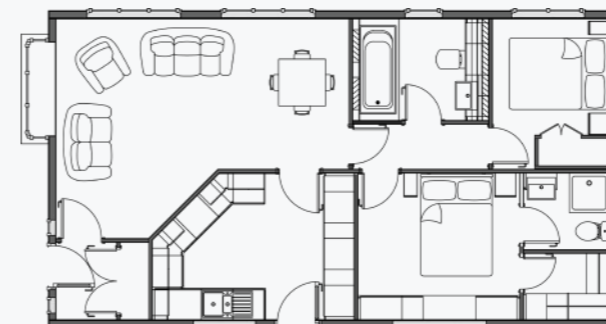
A home that looks truly unique with a distinctive design and spacious living, flexible in a variety of sizes.

QR CODE WEBSITE

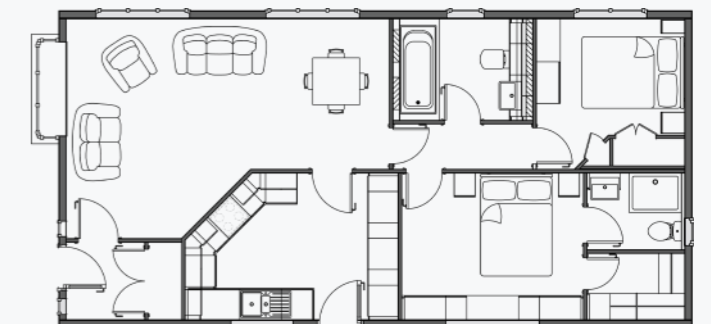


## FLOOR PLANS

36'x 20' 2-bed



40'x 20' 2-bed



More sizes and layouts available on request.

# CARDIGAN COTTAGE

The warmth of a cottage, the ease of modern living.



Inspired by the timeless appeal of a country cottage, this park home brings rustic character through its distinctive timber-detailed exterior. Warm and inviting, it is designed for those who appreciate classic style and a more peaceful way of living. Inside, the lounge offers a cosy retreat with panelled walls, a striking chimney breast and electric stove, while window seats with storage add charm and comfort. The country-style kitchen forms the heart of the home, complete with a statement range cooker, integrated appliances, glazed display cabinets and a separate utility room.

The master bedroom provides a calm and comfortable sanctuary, featuring an integrated ottoman window seat and private en-suite with a spacious shower. In the main bathroom, a freestanding roll-top bath adds a luxurious finishing touch, while beautiful oak details throughout complete the home's traditional character with a modern feel.

## KEY FEATURES

- Cottage-style design with traditional charm
- Oak veneer & oak-effect detailing throughout
- Elegant panelled lounge walls & chimney breast with electric stove.
- Integrated kitchen appliances & range cooker
- Utility laundry room plus practical storage
- Coordinated dining area with French doors to the outside
- Master bedroom featuring elegant built-in furniture
- En-suite shower room with stylish & purposeful storage
- Traditional freestanding bath
- Personalise your home with a choice of exterior and interior finishes

Timeless country styling meets modern craftsmanship for a warm, welcoming home.

QR CODE WEBSITE



QR CODE 360 TOUR



Our photos may include optional upgrades, modifications, or staging.

## FLOOR PLANS

40'x 20' 2-bed



46'x 20' 2-bed and study



More sizes and layouts available on request.

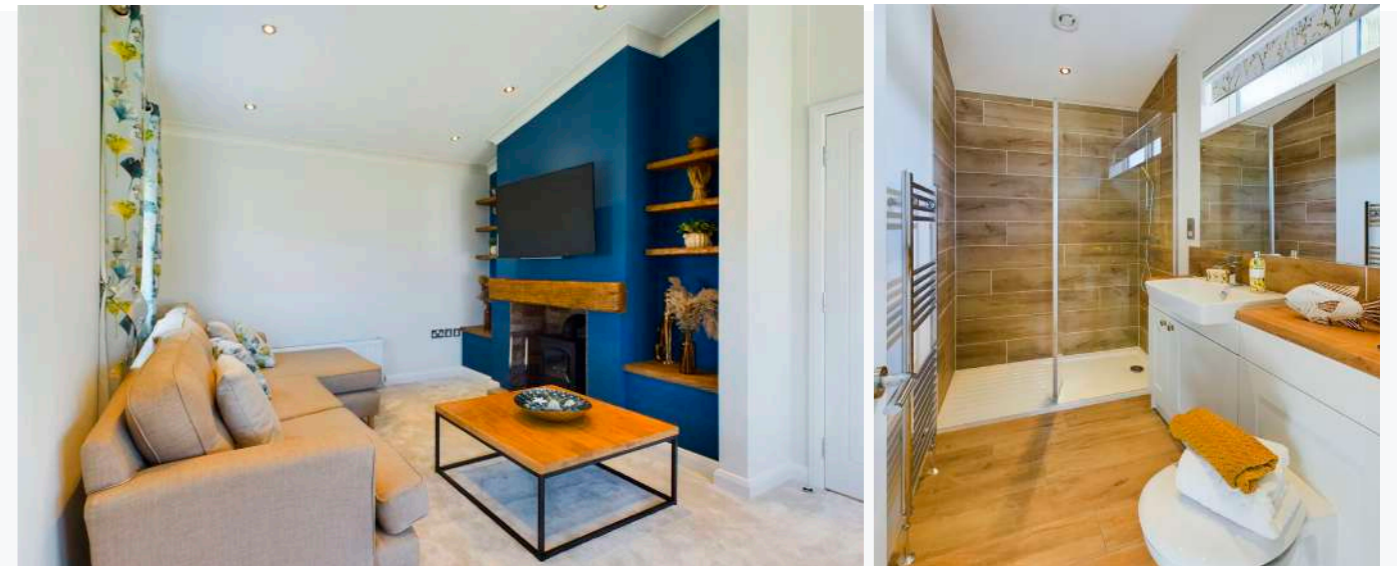
# CHARTWELL

A beautifully balanced home that blends elegance, warmth, and practicality.



The Chartwell blends modern design with timeless country charm, creating a refined yet welcoming home. Its distinctive exterior features tall vertical windows, stepped walls, box bays and a signature gable clock, bringing character, depth and natural light. Inside, the lounge centres around a striking fireplace wall with an electric stove, tiled hearth and oak accents, offering a warm and inviting space.

The kitchen continues the modern country feel with real oak features, a range cooker and integrated appliances, flowing into a bright dining area ideal for everyday living. The master suite combines comfort and practicality with a walk-in wardrobe and en-suite, while the main bathroom features a freestanding roll-top bath and illuminated alcove shelf for a touch of luxury.



Our photos may include optional upgrades, modifications, or staging.

## KEY FEATURES

- Striking exterior with a signature gable clock
- Tall vertical windows for light-filled spaces
- Modern country-style kitchen with real oak features
- Range cooker and integrated appliances
- Lounge fireplace wall with real-oak features, tiled hearth and electric stove
- Dining area with views
- Master bedroom with walk-in wardrobe and en-suite
- Large walk-in shower with stylish vanity storage
- Freestanding roll-top bath with illuminated alcove shelf
- Personalise your home with a choice of exterior and interior finishes
- Available in centre & end lounge layouts

Modern country styling meets refined comfort for a home that's both warm and contemporary.

QR CODE WEBSITE



QR CODE 360 TOUR

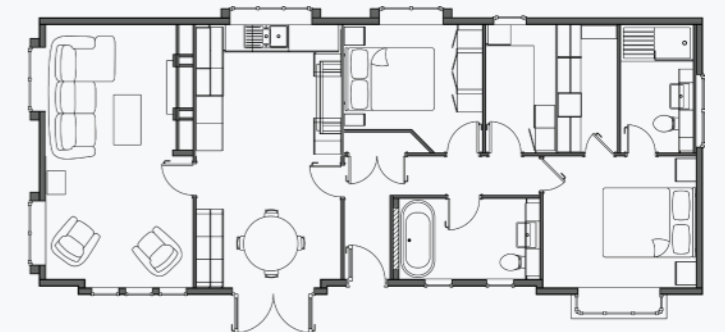


## FLOOR PLANS

40'x 20' 2-bed - centre lounge



48'x 20' 2-bed & study - end lounge



More sizes and layouts available on request.

# CHARTWELL SINGLE

Modern design meets country warmth in a light-filled home full of character.



The Chartwell Single combines elegant design with modern practicality to create a home that feels both stylish and welcoming. Its exterior makes a striking impression with stepped walls, box bays, tall vertical windows, a signature gable clock and contrasting finishes, giving this single model the same timeless appeal as its larger twin counterpart.

Inside, contemporary comfort is softened by subtle country charm. The kitchen features real oak details, a traditional range cooker and integrated appliances, while the bright lounge is centred around a feature chimney wall and electric stove fire. Bedrooms offer built-in storage and space for double beds, and the bathroom adds a luxurious touch with a freestanding roll-top bath, quadrant shower and illuminated alcove shelf.



Our photos may include optional upgrades, modifications, or staging.

## KEY FEATURES

- Striking exterior with stepped walls, contrasting finishes and a signature gable clock
- Tall vertical windows creating bright, light-filled interiors
- Modern country-style kitchen with real oak features
- Traditional range cooker and integrated appliances
- Bright, inviting lounge with an electric stove fire and feature chimney wall
- Dining area with views to enjoy
- Master and guest bedrooms with built-in storage
- Stylish bathroom vanity unit with useful storage
- Freestanding roll-top bath, quadrant shower and illuminated alcove shelf
- Designed for comfort, light and easy living, with choices for interior and exterior finishes
- Available in centre & end lounge layouts

From its thoughtful layout to its refined detailing, the Chartwell Single offers a lifestyle that's both easy and enriching — a perfect blend of comfort and character.

QR CODE WEBSITE

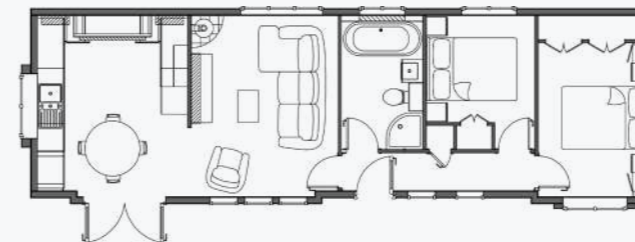


QR CODE 360 TOUR

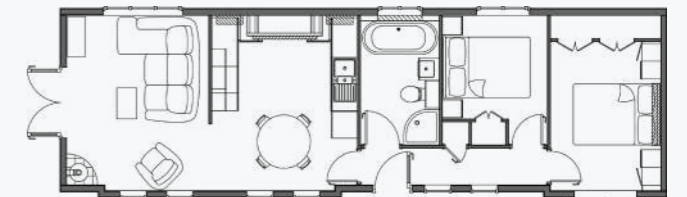


## FLOOR PLANS

45'x 14' 2-bed - centre lounge



45'x 14' 2-bed - end lounge



More sizes and layouts available on request.

# CHATSWORTH GOLD

An elegant home that blends light, space, and refined contemporary design.



The Chatsworth Gold balances timeless design with modern comfort, combining a rendered finish with low-maintenance cladding and distinctive box bay windows with glazed returns. These elegant features bring in plenty of natural light and give the home a welcoming, stylish character.

Inside, the bright open-plan layout is designed for both relaxing and everyday living. The lounge, with box bay windows to three sides, centres around a striking media wall electric fire. The adjoining kitchen and dining area features a statement island with integrated hob, double oven, generous storage and a practical utility area. In the bedrooms and bathrooms, built-in furniture, refined finishes and well-planned storage complete a home that feels comfortable, polished and easy to enjoy.



Our photos may include optional upgrades, modifications, or staging.

## KEY FEATURES

- Elegant exterior with render and low-maintenance cladding
- Box bay windows with glazed returns for natural light
- Energy-efficient LED downlights throughout
- Vaulted ceilings to the living spaces
- Media wall with a modern electric fire
- Utility area with built-in storage
- Spacious open-plan lounge and dining area
- Statement kitchen island with hob and feature extractor
- Integrated appliances & high-level double oven for easy access
- Master bedroom with modern design touches and fitted furniture
- Fully tiled en-suite with large shower and heated towel rail

The Chatsworth Gold delivers comfort and stylish living for those seeking a relaxed and refined park home lifestyle.

QR CODE WEBSITE

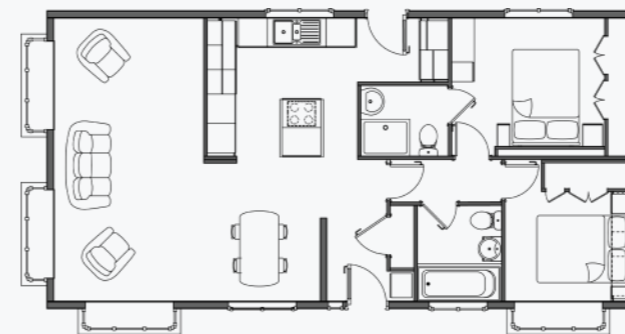


QR CODE 360 TOUR

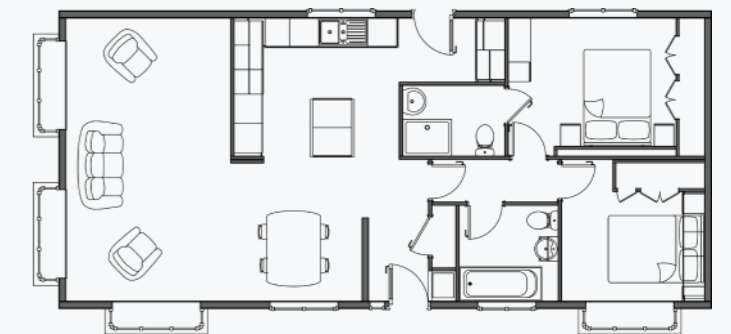


## FLOOR PLANS

40'x 20' 2-bed



44'x 20' 2-bed



More sizes and layouts available on request.

# GOODWOOD

Everything you need for a modern, comfortable lifestyle.



The Goodwood offers the perfect balance of modern design and inviting comfort. Its exterior combines low-maintenance cladding with a render finish, creating a contemporary look that stands out. Architectural details like the clad-in-filled gable above the entrance and distinctive bay windows add shape and charm, while large patio doors open the lounge to the garden—ideal for making the most of sunny afternoons and quiet evenings outdoors.

Inside, the layout is designed for ease and enjoyment. The galley-style kitchen flows into the dining area, making everyday living and entertaining effortless. A box bay window fills the dining space with natural light, enhancing the sense of openness, while the kitchen offers integrated appliances, generous storage, and a high-level oven. A separate utility room keeps daily tasks out of sight, and the master bedroom layout is equally well considered, with a walk-in wardrobe and en-suite, plus a family bathroom with bath and vanity storage.

## KEY FEATURES

- Clad-in-filled gable & compound bay windows add shape and character
- Walk-in box bay to the dining area enhances light and space
- Patio doors open from the lounge to the outdoors
- Stylish galley kitchen with integrated appliances & ample storage
- High-level oven for easy access
- Practical utility laundry room with additional storage
- Master bedroom with walk-in wardrobe and en-suite shower room
- Family bathroom with bath and vanity storage
- Personalise your home with a choice of exterior and interior finishes

Goodwood is ideal for those seeking an easy, contemporary home that doesn't compromise on quality or comfort.

QR CODE WEBSITE



QR CODE 360 TOUR



Our photos may include optional upgrades, modifications, or staging.

## FLOOR PLANS

40'x 20' 2-bed



46'x 20' 2-bed & study



More sizes and layouts available on request.

# HARDWICK

Modern design meets everyday comfort in a thoughtfully crafted home built for relaxed, practical living.



The Hardwick combines modern style with practical design, featuring a striking exterior of low-maintenance cladding and render for a fresh, contemporary look. Box bay windows, a clad-infilled gable above the front door and a recessed entrance add character, while also creating a welcoming focal point with added shelter from the elements.

Inside, vaulted ceilings enhance the sense of light and space, with a separate lounge offering a calm retreat and the adjoining kitchen and dining area creating a sociable setting for everyday living. Integrated appliances and a high-level oven add convenience, while the entrance bench and coat hooks bring useful practicality. The master bedroom includes fitted storage and an en-suite shower room, complemented by a family bathroom with a bath and vanity unit, for relaxed and modern park home living.

## KEY FEATURES

- Contemporary exterior with cladding and render finish
- Box bay windows & clad-infilled gable add character and shape
- Recessed front entrance for protection from the elements
- Vaulted ceilings for light and spacious living areas
- Separate lounge for a calm, cosy retreat
- Spacious open-plan kitchen and dining area
- Integrated appliances with high-level oven
- Handy bench with coat hooks
- Master bedroom with built-in wardrobes
- En-suite shower room and family bathroom with practical storage
- Personalise your home with a choice of exterior and interior finishes

Every detail in the Hardwick is designed to make life simpler.

QR CODE WEBSITE



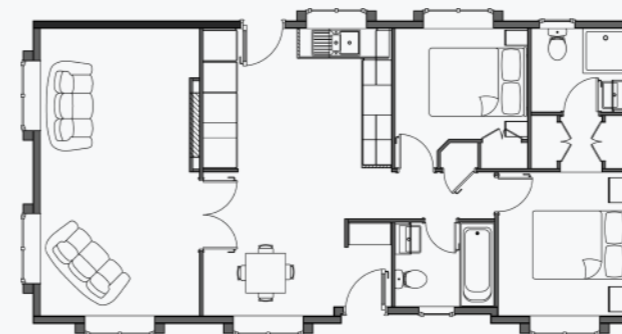
QR CODE 360 TOUR



Our photos may include optional upgrades, modifications, or staging.

## FLOOR PLANS

40'x 20' 2-bed



45'x 20' 2-bed & study



More sizes and layouts available on request.

# HATFIELD

Where living and laughter gather at the heart, with privacy at both ends.



The Hatfield park home combines contemporary styling with practical everyday living. Its exterior pairs render with low-maintenance cladding for a clean, timeless look, while a gable feature above the front door adds character and creates a sheltered entrance. Inside, a bright entrance hall with a cushioned bench, built-in storage and easy-clean flooring sets a welcoming tone.

At the heart of the home, the open-plan lounge, dining and kitchen area feels light and sociable, enhanced by vaulted ceilings, half-panelled details and a media wall with an integrated widescreen electric fire. Private bedroom suites sit at either end, with a master bedroom featuring a walk-in wardrobe and en-suite shower room, alongside a guest bedroom with fitted storage. A family bathroom with bath and vanity unit, plus a separate airing cupboard, completes the layout.

## KEY FEATURES

- Stylish exterior with low-maintenance cladding and a gabled entrance
- Central open-plan layout with the living space at its heart
- Vaulted ceilings for a bright, spacious feel
- Private bedroom suites at each end of the home
- Feature media wall with widescreen electric fire
- Half-panelled walls to the lounge and dining area
- Welcoming entrance hall with bench seating, storage and easy-clean flooring
- Master bedroom with feature headboard wall and reading lights
- Walk-in wardrobe and en-suite to the master bedroom
- Guest bedroom with fitted wardrobes and bedside furniture
- Family bathroom with vanity storage, plus a separate airing cupboard

The Hatfield offers not just a home — but a lifestyle of ease, comfort, and modern elegance, perfectly suited to today's park living.

QR CODE WEBSITE



Our photos may include optional upgrades, modifications, or staging.

## FLOOR PLANS

38'x 20' 2-bed



40'x 20' 2-bed



More sizes and layouts available on request.

# KENSINGTON

Experience elevated park home living where light, space and modern design come together in perfect harmony.



The Kensington park home brings contemporary style and a real sense of occasion. Its striking exterior combines render, low-maintenance cladding and coloured windows, while stepped-out cathedral windows and box bays add architectural character and draw natural light deep into the home. Inside, vaulted ceilings and glass-panelled dividers enhance the bright, open feel, creating a flowing connection between the kitchen, dining and lounge areas.

At the heart of the home, the kitchen is designed for both everyday comfort and entertaining, with quartz worktops, an island breakfast bar, integrated appliances, a wine chiller, pop-up sockets and Velux roof windows. The master suite offers a calm, indulgent retreat with a walk-in wardrobe and stylish en-suite, while the family bathroom completes the home with a freestanding bath, feature lighting and stylish vanity storage.



Our photos may include optional upgrades, modifications, or staging.

## KEY FEATURES

- Distinctive exterior styling with striking cathedral windows
- Vaulted ceilings create a bright, spacious atmosphere
- Illuminated glass-panelled dividers add style and gentle separation
- Statement quartz kitchen worktops with island breakfast bar and waterfall ends
- Premium integrated appliances and pop-up socket to the island
- Tiled kitchen floor and feature tiled window wall for a smart contemporary finish
- Twin Velux roof windows bring extra natural light into the kitchen
- Integrated ceiling speakers enhance the main living spaces
- Lounge with a widescreen electric fire for a stylish focal point
- Main bedroom suite with LED-lit walk-in wardrobe and fully tiled en-suite
- Fully tiled family bathroom with freestanding bath, illuminated alcove shelf and stylish vanity storage

The Kensington is designed to deliver a premium living experience — combining comfort and style for modern park home living.

QR CODE WEBSITE

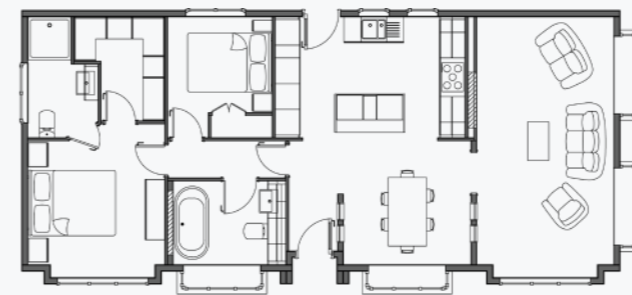


QR CODE 360 TOUR

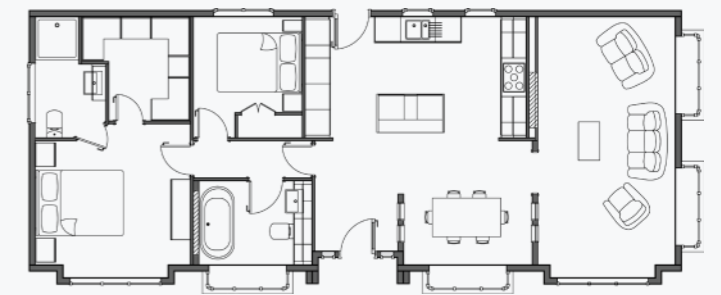


## FLOOR PLANS

46'x 20' 2-bed



50'x 20' 2-bed



More sizes and layouts available on request.

# TREDEGAR ELITE

A beautifully balanced home combining modern design, smart layouts, and relaxed everyday comfort.



The Tredegar Elite combines modern style with everyday practicality, making it a popular choice for contemporary park home living. Its smart exterior blends render and attractive cladding for a fresh, low-maintenance finish, while the flush gable, recessed front door and box bay windows add depth, shelter and plenty of natural light. Inside, a choice of side or cross lounge layouts creates a bright, flexible living space, with an electric fireplace adding warmth and character.

The dining area is ideal for relaxed meals or entertaining, while the kitchen offers integrated appliances, a high-level oven and generous workspace. A separate utility room adds welcome practicality, keeping laundry and storage neatly tucked away. The spacious master bedroom includes a walk-in wardrobe and private en-suite shower room, while the guest bedroom features built-in furniture for added comfort.



Our photos may include optional upgrades, modifications, or staging.

## KEY FEATURES

- Modern exterior design with a mix of render and low-maintenance cladding
- Flush gable feature and recessed front door for added style and shelter
- Two large box bay windows bringing natural light into the living spaces
- Choice of flexible layouts – side lounge or cross lounge options
- Spacious lounge with electric fireplace creating a welcoming focal point
- Dining area ideal for entertaining family and guests
- Fully equipped kitchen with integrated appliances and high-level oven
- Dedicated utility room with ample storage and workspace
- Bright master bedroom with walk-in wardrobe and en-suite shower room
- Family bathroom with vanity storage, plus generous hallway cupboard space

The Tredegar Elite delivers everything needed for modern park home living — smart design, comfort, and effortless style in one beautifully built home.

QR CODE WEBSITE



QR CODE 360 TOUR

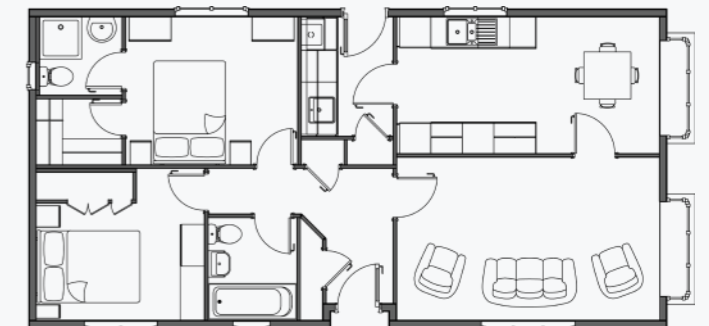


## FLOOR PLANS

40'x 20' 2-bed - cross lounge



40'x 20' 2-bed - side lounge



More sizes and layouts available on request.

# TREDEGAR ELITE SINGLE

A stylish and efficient home that captures the essence of modern park living at its best.



The Tredegar Elite Single blends contemporary style with practical living, pairing render and low-maintenance cladding for a smart exterior finish. A flush gable entrance, feature box bay window and sliding patio doors add character while filling the home with natural light and creating an easy connection to the garden, ideal for relaxed mornings or sunny evenings outdoors.

Inside, the bright lounge feels welcoming and airy, centred around a feature electric fire and flowing into the dining area and well-planned kitchen with integrated appliances and generous storage. The master and guest bedrooms provide comfortable retreats with fitted wardrobes and coordinated furniture, while the family bathroom is thoughtfully finished with a shower over the bath and practical vanity storage.



Our photos may include optional upgrades, modifications, or staging.

## KEY FEATURES

- Modern exterior with a mix of render and low-maintenance cladding
- Flush gable feature over the front door for added style
- Box bay window to the lounge for enhanced natural light
- Patio doors connecting the lounge to outdoor living space
- Bright, semi-open plan layout with defined living areas
- Lounge with electric fireplace creating a cosy focal point
- Thoughtfully designed kitchen with integrated appliances
- Dining area positioned for easy serving and social dining
- Comfortable master bedroom with built-in wardrobes and matching furniture
- Guest bedroom with built-in storage for visitors

Designed for easy, low-maintenance living, the Tredegar Elite Single offers a stylish and modern way to embrace the park home lifestyle.

QR CODE WEBSITE

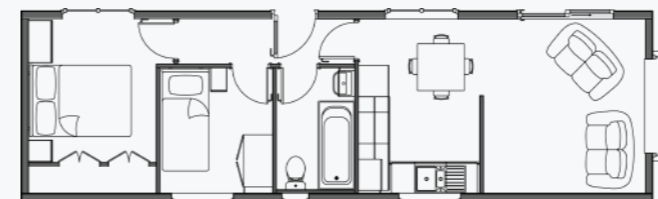


QR CODE 360 TOUR

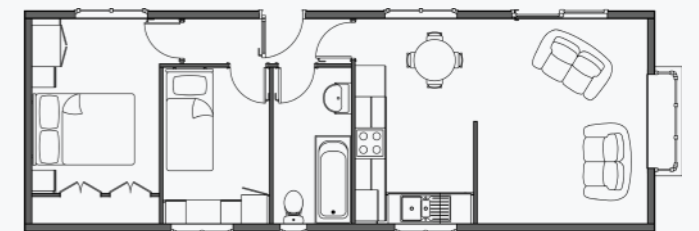


## FLOOR PLANS

40'x 12' 2-bed



40'x 14' 2-bed



More sizes and layouts available on request.

# WENTWOOD

A home that blends clean architectural lines with bright, inviting interiors.



The Wentwood blends contemporary design with warm, homely comfort, offering modern living without compromise. Its exterior makes a striking first impression with clean lines, stepped walls, and a mix of render and low-maintenance cladding, while tall windows fill the home with natural light. A centred flush-face gable with diamond window adds a distinctive finishing touch to this elegant design.

Inside, the open-plan lounge and dining area feels bright, spacious, and welcoming, enhanced by vaulted ceilings, large windows, and French doors. A stylish slat feature wall with electric fire and TV space creates a focal point, while the kitchen adds practicality with integrated appliances, under-cabinet LED lighting, and a Velux roof window. Practical features include a separate utility room, while the master bedroom enjoys a walk-in wardrobe and private en-suite. The main bathroom is equally inviting, complete with a freestanding bath.



Our photos may include optional upgrades, modifications, or staging.

## KEY FEATURES

- Striking exterior with clean architectural lines, stepped walls, and a flush gable with diamond window
- Family bathroom with freestanding bath, feature tiling, large mirrors, and vanity storage
- Bright open-plan lounge and dining area with vaulted ceilings
- Contemporary slat feature wall with electric fire and media space
- Stylish kitchen with integrated appliances
- High-level double oven for added everyday convenience
- LED under-cabinet lighting and a Velux roof window for a bright, modern kitchen
- Separate utility room with sink, integrated laundry appliances, and storage
- Additional large storage cupboard to the utility area
- Master bedroom with walk-in wardrobe and fitted furniture
- En-suite with quadrant shower, vanity storage, and illuminated mirror

Every detail of the Wentwood has been designed for comfort, ease, and lasting appeal — a home that feels contemporary yet timeless, ready to suit the lifestyle you want to enjoy.

QR CODE WEBSITE



QR CODE 360 TOUR



## FLOOR PLANS

40'x 20' 2-bed



50'x 20' 2-bed & study



More sizes and layouts available on request.

# WENTWOOD SINGLE

Modern architecture meets effortless living — bringing light, space, and style together.



Our photos may include optional upgrades, modifications, or staging.

The Wentwood Single makes a striking first impression with its modern exterior, blending low-maintenance cladding and render for a refined look. A flush gable entrance with a feature diamond window adds character, while large coloured windows fill the home with natural light. A sliding patio door from the dining area opens the space to outdoor living, perfect for enjoying sunny mornings or relaxed evenings.

Inside, vaulted ceilings enhance the sense of light and space across the open-plan lounge, dining area, and kitchen, creating an inviting hub for everyday living and entertaining. The lounge features an electric fire with space for a wall-mounted TV, while the well-equipped kitchen includes integrated appliances for style and practicality. The master bedroom offers fitted furniture, wardrobes, and a dressing table, complemented by a comfortable guest bedroom and a family bathroom with a shower bath and vanity storage.

## KEY FEATURES

- Striking exterior with clean, contemporary architectural lines
- Flush gable entrance with feature diamond window
- Stylish mix of render and low-maintenance cladding
- Large lounge windows bringing in plenty of natural light
- Sliding patio door from the dining area to the outdoors
- Vaulted ceilings to the living areas for added light and space
- Well-planned kitchen with integrated appliances
- Bright master bedroom with fitted furniture and dressing table
- Comfortable guest bedroom with built-in storage
- Family bathroom with shower bath and vanity storage
- Handy hall cupboard for useful extra storage

Wentwood Single offers a beautifully balanced home that combines comfort, style, and easy living — the ideal setting for a modern park lifestyle.

QR CODE WEBSITE

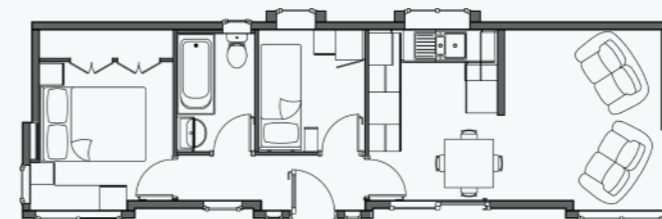


QR CODE 360 TOUR

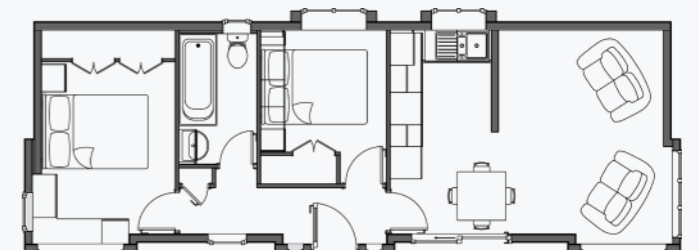


## FLOOR PLANS

40'x 12' 2-bed



40'x 14' 2-bed



More sizes and layouts available on request.

# WINDSOR

Elegant architecture and bright spaces — the Windsor welcomes you home.



The Windsor brings together timeless character and modern comforts in a beautifully balanced design. Striking gabled rooflines, coloured windows, and a smart blend of render and low-maintenance cladding create a refined exterior, while the diamond feature window, soffit lighting, and recessed front door add warmth and practicality. Patio doors from the lounge open the home to outdoor living, making the Windsor as welcoming outside as it is within.

Inside, vaulted ceilings and tall feature windows create bright, uplifting spaces filled with natural light. The lounge flows into the dining area, while the spacious galley kitchen offers integrated appliances, generous storage, LED lighting, and a high-level double oven, complemented by a practical utility room. The master bedroom includes excellent wardrobe space and a stylish en-suite shower room, while the guest bedroom offers fitted storage. A fully tiled family bathroom with a built-in bath completes this elegant and thoughtfully designed home.

## KEY FEATURES

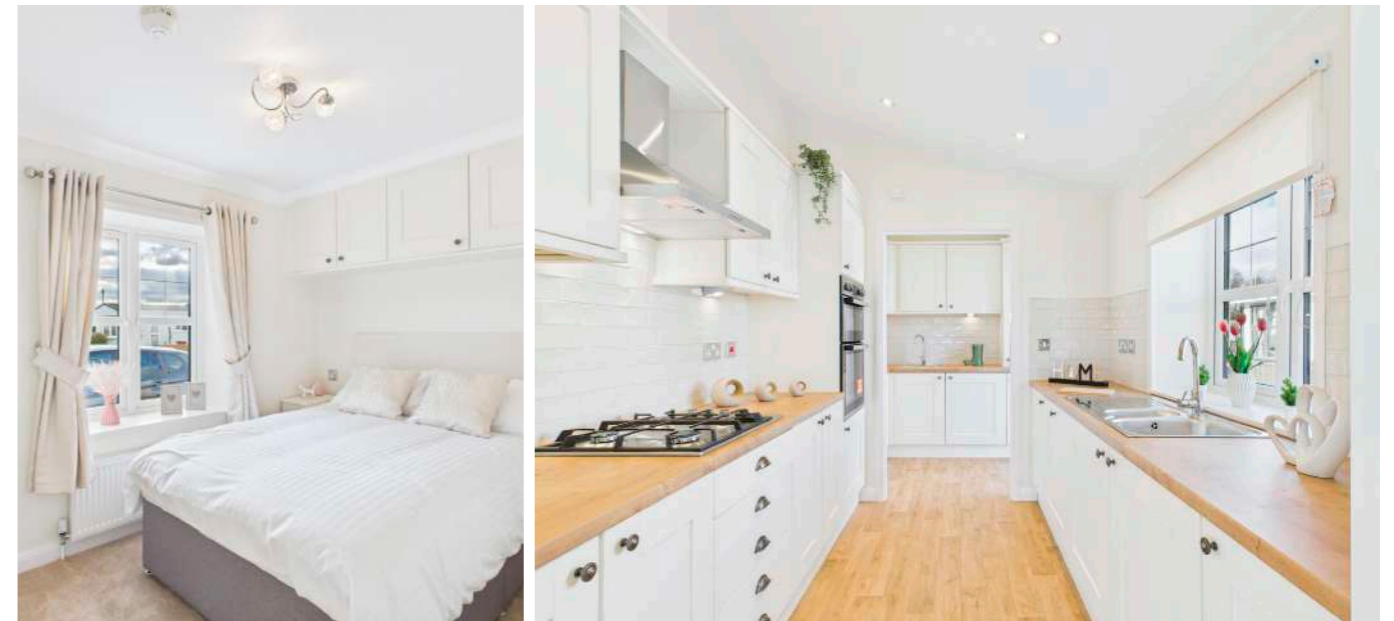
- Distinctive exterior design with modern architectural detailing
- Coloured windows, feature gable, diamond window and soffit lighting
- Recessed front door for added shelter and practicality
- Patio doors from the lounge for easy outdoor living
- Vaulted ceilings and LED downlights create bright, airy living spaces
- Dining area enhanced by tall feature windows
- Spacious galley kitchen with generous worktop and storage space
- Integrated appliances, high-level double oven and LED under-cabinet lighting
- Separate utility room for laundry and extra everyday storage
- Master bedroom with twin box bay windows and fitted wardrobes with hidden drawers
- Stylish en-suite shower room and fully tiled family bathroom with bath and vanity storage

Designed for those who value both design and liveability, the Windsor offers a bright, welcoming space that's easy to enjoy and maintain.

QR CODE WEBSITE



QR CODE 360 TOUR



Our photos may include optional upgrades, modifications, or staging.

## FLOOR PLANS

40'x 20' 2-bed



50'x 20' 2-bed & study



More sizes and layouts available on request.

# WOBURN

Blending distinctive design with bright spaces — a home made for modern life.



The Woburn blends traditional charm with modern design, taking inspiration from the cosy character of a country cottage and reimagining it for contemporary living. Its distinctive exterior combines render and low-maintenance cladding with coloured windows, elegant box bays and a flush gable over the recessed front door. Tall glazed panels and extended roof overhangs complete the look, giving the home a welcoming feel and strong kerb appeal.

Inside, the Woburn is bright, spacious and thoughtfully arranged for everyday comfort. Vaulted ceilings enhance the sense of space, while the separate lounge feels warm and inviting, with tall feature windows and a focal wall for an electric fire and TV. The kitchen is well equipped with integrated appliances, generous storage and a high-level oven, while patio doors from the dining area bring the outside in. A utility room, stylish bathroom, guest bedroom and luxurious master suite complete this beautifully balanced home.

## KEY FEATURES

- Distinctive exterior with render, low-maintenance cladding and extended roof overhangs
- Coloured modern windows, clad box bays and slim glazed entrance panels add character
- Flush-face gable and recessed front door create a stylish, sheltered entrance
- Bright, airy interiors with vaulted ceilings for a spacious feel
- Cosy separate lounge with tall feature windows and a focal media/fire wall
- Well-planned kitchen with integrated appliances and a high-level oven
- Dining area with patio doors for easy indoor-outdoor living
- Separate utility room with integrated laundry appliances and useful storage
- Generous master bedroom with walk-in wardrobe
- Stylish en-suite with quadrant shower and vanity storage
- Guest bedroom and family bathroom with built-in storage, bath and illuminated alcove shelving

The Woburn is designed for easy, elegant living — combining the warmth of a classic cottage with modern comfort.

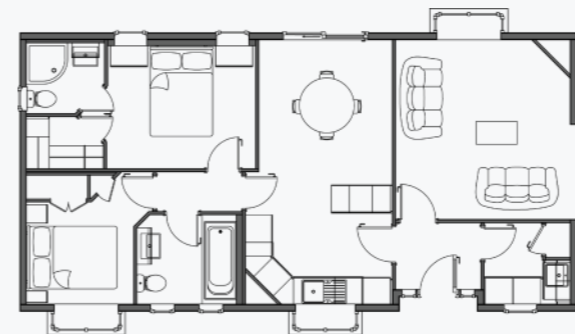
QR CODE WEBSITE



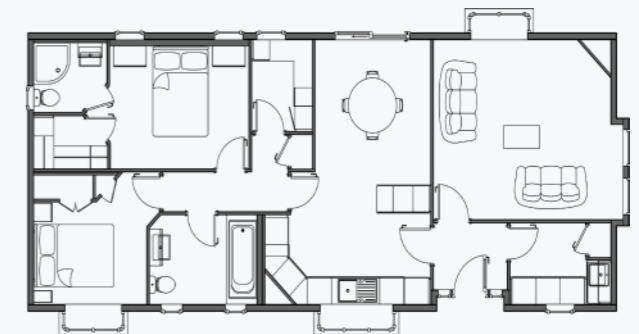
Our photos may include optional upgrades, modifications, or staging.

## FLOOR PLANS

40'x 20' 2-bed



48'x 20' 2-bed & study



More sizes and layouts available on request.

## The Stately Park Homes Standard

At Stately Park Homes we have a long history of manufacturing beautifully crafted park homes and lodges. Our company was founded in 1963, which coincidentally is the exact same year the very first British Standard for residential caravans was published.

Since then, both our company and the industry standards have evolved significantly. Today, we are proud that every home we build is constructed to the current British Standard 3632.

For our customers, this is more than just a technical certification; it is your assurance that the property is built to a specific level of durability, safety, and comfort.

### What is BS 3632?

BS 3632 is the British Standard for residential park homes, setting the benchmark for homes built for permanent, year-round living. For homeowners, that means the reassurance of a home designed with comfort, energy efficiency, safety and durability in mind—so you can enjoy a space that feels warm, secure and ready for everyday life, whatever the season.

**At a glance:**

- Year-round durability
- Thermal efficiency
- Air quality & ventilation
- Sound insulation
- Safety features
- Energy efficiency

### Members of the NCC

We are a proud member of the National Caravan Council (NCC), the UK trade body representing the tourer, motorhome, holiday home, and park home industries.

As part of our membership, our manufacturing process and our homes are regularly inspected throughout the year to ensure strict compliance with industry standards. We are delighted to state that for the past several years, Stately Park Homes has consistently achieved 5-star certification—the highest possible rating—from the NCC. This serves as an independent verification of our commitment to building homes of exacting standards.

## Warranty protection built into every Stately home

Our warranty cover brings together manufacturer support, recognised third-party protection and individual product warranties, all designed to provide clarity, reassurance and peace of mind as you enjoy your new home.



### 10-Year Platinum Seal Warranty

Every new Stately home comes with Platinum Seal protection — an insurance-backed 10-year structural warranty scheme created for residential park homes, providing valuable long-term protection for your new home.



### Our Manufacturer Warranty

From the very beginning, your home is supported by our two-year manufacturer warranty. It covers the home, its structure, and its fixtures and fittings, and is supported by our experienced Customer Care team, who are on hand to help beyond handover.

### Layered cover

With layered warranty protection, your new home is supported in more ways than one. Alongside the 10-year Platinum Seal structural warranty and our manufacturer warranty, selected features, fittings and components across the home also benefit from their own supplier warranties, including windows and doors, roof tiles, heating systems and appliances, among others. Together, they provide added support and confidence for the years ahead.

## Ready to start your journey?

Discover helpful online resources to guide you towards the perfect home.

Start Exploring

### Find a Park

Explore our online interactive map for residential park home and lodge communities across the UK. Discover where your next chapter could begin.

QR CODE



Plan with Confidence

### A Guide to Choosing and Designing Your Home

Visit our online guide to learn how your plot can affect your home choice and layout, and how we can help you shape the design and style to suit your preferences. It's a helpful first step towards creating a home that's right for you.

QR CODE



## A guided path to your new home

Follow the ten key milestones so you can plan your journey.

- 1

**Find a park**

Explore regions, amenities and lifestyle fit before settling on your preferred community.
- 2

**Select your plot**

Walk the available plots with the park team to understand services, orientation and key considerations.
- 3

**Choose your model**

Shortlist Stately homes that align with the plot size, outlook and lifestyle priorities.
- 4

**Receive an initial estimate**

The park will give you a guide price covering the plot works, on-site services and the home.
- 5

**Refine your floor plan**

Collaborate with our design team to adapt your home to suit the way you want to live.
- 6

**Specify finishes and fixtures**

Finalise colour palettes, fixtures, fittings and furnishings with guidance from our stylists.
- 7

**Park receives final estimate**

Stately issues the build price, plan and specification for your tailored home to the park, enabling them to provide your full turnkey figure.
- 8

**Sign off with the park**

You approve the turnkey costs, plan and specification, and the park confirms with us so we can lock in your design.
- 9

**Scheduling & build**

We schedule the production slot, craft your home, and share the estimated ready date with the park.
- 10

**Delivery & set-up**

Your park will arrange transport from our factory, oversee installation on site and prepare the home for move-in day.



## Contact Us

Stately Park Homes  
Unit 20, Darren Drive  
Prince of Wales Ind. Est.  
Abercarn  
NP11 5AR



Phone: 01495 244472  
Email: [sales@stately.co.uk](mailto:sales@stately.co.uk)  
**[stately.co.uk](https://www.stately.co.uk)**